

# Gremlin Giggles

November 20, 2007

Number 15

## Spelling Week

XXV

possible  
sat  
real  
heart  
different  
there  
then  
simple  
another  
early  
finally'  
almost  
than  
distance  
followed  
their  
morning  
quite  
idea  
although  
vibration  
volume  
pitch  
frequency  
sound

## Challenge

ravine  
wince  
squawk  
gaze  
league  
vault  
bulk  
avoid  
avoid  
theme  
sought  
depth  
throne  
hoist  
strive  
routine  
prompt  
stout  
mute  
reply  
strain  
vibration  
volume  
pitch  
frequency  
sound

## Dates to Remember

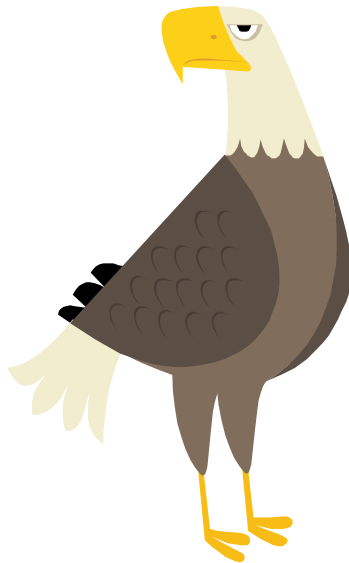
*Holiday week next week! I will see the Gremlins again on Monday, December 1st.*

*We perform for you, December 2nd . Be here with a broom and a red tee-shirt! 6:00 call time!*

*Our Holiday Party will be Friday, December 19, beginning at lunchtime, 12:36. If you are interested in helping with time or supplies or both, please contact Mrs. Tackett.*

*End of the grading period is the last day of Class in December. I will teach up through that day, December, 19.*

*Please encourage your Gremlin to stay in the game!*



## Sound, Coming Up!

We will study the properties of sound for our next science unit. Please check out the Science News that went home yesterday for websites, ideas and information to help your student. We will write another chapter in our Book of Gremlin Science, to assess our learning at the end of the unit in late December.

## Explorer Projects

These are due December 5th. We will present in class on that day, take the quizzes and play the games.

**Gremlin** \_\_\_\_\_ **Date** \_\_\_\_\_  
(name and number)

**Behavior**      **1**    **2**    **3**    **4**    \_\_\_\_\_  
**Gremlin work** **1**    **2**    **3**    **4**    \_\_\_\_\_

X \_\_\_\_\_

Please sign and return this portion tomorrow

